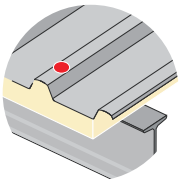
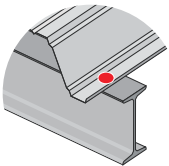




## **EJOT® Roofing & Cladding**

JT2 EJO GUARD Carbon Steel Self-Drilling Screws  
for roofing, cladding and general constructions

**EJOT® SAPHIR Self-drilling screw JT2-6-5.5**



Ø mm	Screw Length mm	Sandwich Panel Thickness mm	Clamping Thickness mm	PU	Order description
<b>16 mm CS Washer (Main Fixing Light/Medium Section)</b>					
5.5	25	-	3 - 10 mm	-	<b>JT2-6-5.5x25-G14</b>
5.5	35	-	3 - 20 mm	-	<b>JT2-6-5.5x35-G16</b>
5.5	55	-	3 - 40 mm	-	<b>JT2-6-5.5x55-G16</b>
5.5	65	12 - 45 mm	12 - 50 mm	-	<b>JT2-6-5.5x65-G16</b>
5.5	85	32 - 65 mm	32 - 70 mm	-	<b>JT2-6-5.5x85-G16</b>
5.5	105	52 - 85 mm	52 - 90 mm	-	<b>JT2-6-5.5x105-G16</b>
5.5	125	72 - 105 mm	72 - 110 mm	-	<b>JT2-6-5.5x125-G16</b>
5.5	145	92 - 125 mm	92 - 130 mm	-	<b>JT2-6-5.5x145-G16</b>
5.5	165	112 - 145 mm	112 - 150 mm	-	<b>JT2-6-5.5x165-G16</b>
<b>19 mm CS Washer (Main Fixing Light/Medium Section)</b>					
5.5	25	-	3 - 10 mm	-	<b>JT2-6-5.5x25-G19</b>
5.5	35	-	3 - 20 mm	-	<b>JT2-6-5.5x35-G19</b>
5.5	55	-	3 - 40 mm	-	<b>JT2-6-5.5x55-G19</b>
5.5	65	12 - 45 mm	12 - 50 mm	-	<b>JT2-6-5.5x65-G19</b>
5.5	85	32 - 65 mm	32 - 70 mm	-	<b>JT2-6-5.5x85-G19</b>
5.5	105	52 - 85 mm	52 - 90 mm	-	<b>JT2-6-5.5x105-G19</b>
5.5	125	72 - 105 mm	72 - 110 mm	-	<b>JT2-6-5.5x125-G19</b>
5.5	145	92 - 125 mm	92 - 130 mm	-	<b>JT2-6-5.5x145-G19</b>
5.5	165	112 - 145 mm	112 - 150 mm	-	<b>JT2-6-5.5x165-G19</b>

**Application Range**

- Fastening of profiled steel sheets and sandwich panels onto 1.5–5 mm steel substrate

**Features**

- Case-hardened steel
- EJOGUARD - high-grade coating to improve the corrosion protection (15 Kesternich cycles, DIN 50018, 1997, 1000 h salt spray test, DIN EN ISO 9227 – NSS)
- Galvalume EPDM bonded washer

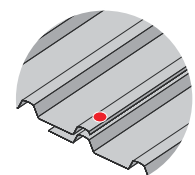
**Technical Data**

Drilling capacity  $t_1 + t_{II}$  ..... 1.5 + 5.0 mm  
 Drive ..... hexagon A/F8 mm



**EJOT® SAPHIR Self-drilling screw JT2-2-4.8**

Ø mm	Screw Length mm	Sandwich Panel Thickness mm	Clamping Thickness mm	PU	Order description
<b>14 mm CS Washer (Stitching Screw)</b>					
4.8	19	-	-	-	<b>JT2-2-4.8x19-G14</b>



**Application Range**

- Side lap stitching of profiled steel sheets

**Features**

- Case-hardened steel
- EJO GUARD - high-grade coating to improve the corrosion protection (15 Kesternich cycles, DIN 50018, 1997, 1000 h salt spray test, DIN EN ISO 9227 – NSS)
- Galvalume EPDM bonded washer

**Technical Data**

Drilling capacity  $t_1 + t_{II}$  ..... 1.0 + 1.0 mm  
 Drive ..... hexagon A/F8 mm

**EJOT® SAPHIR self-drilling screw JT2-6-5,5xL**

Minimum tensile strength of the screw	
Ø mm	kN
5.5	12.5

Minimum shear strength of the screw	
Ø mm	kN
5.5	8.95

Component $t_{NII}$ [mm]	1.50	2.00	2.50	3.00	4.00	5.00
Characteristic transverse tensile strength $V_{R,K}$ [kN] for component $t_{NII}$ [mm]	0.50	-	-	-	-	-
	0.55	-	-	-	-	-
	0.63	2.60 ac	2.80 ac	2.80 ac	2.80 abcd	3.80 abcd
	0.75	3.00	3.50 ac	3.50 ac	3.50 ac	4.60 ac
	0.88	3.40	4.20	4.20 ac	4.20 ac	5.30 ac
	1.00	3.80	4.50	4.50 ac	4.50 ac	8.00 ac
	1.13	4.20	4.90	4.90	4.90 ac	6.70 ac
	1.25	4.60	5.30	5.30	5.30 ac	7.30 ac
	1.50	5.30	6.00	6.00	6.00	8.10
	1.75	5.30	6.00	6.00	6.00	8.10
Characteristic pull-out strength $N_{R,K}$ [kN] for component $t_{NII}$ [mm]	0.50	-	-	-	-	-
	0.55	-	-	-	-	-
	0.63	1.60 ac	2.20 ac	2.20 ac	2.20 abcd	2.20 abcd
	0.75	1.60	2.50 ac	2.90 ac	2.90 ac	2.90 ac
	0.88	1.60	2.50	3.60 ac	3.60 ac	3.80 ac
	1.00	1.60	2.50	3.60 ac	4.70 ac	4.70 ac
	1.13	1.60	2.50	3.60	4.80 ac	5.70 ac
	1.25	1.60	2.50	3.60	4.80 ac	6.80 ac
	1.50	1.60	2.50	3.60	6.80	6.80
	1.75	1.60	2.50	3.60	6.80	6.80
2.00	1.60	2.50	3.60	6.80	6.80	

**ETA-10/0200, appendix 15**

Component I: S280GD, S320GD order S350GD - EN 10346

Component II: S235, S275 order S355-EN10025-1, S280GD, S320GD order S350GD - EN10346